

# A VIBRANT BUILDING

“ This investment in the Students’ Union will help us to create a really vibrant and exciting hub for the student community. UBU has been working hard over the last two years to understand what our members want and to reshape our services so that we can meet this expectation. The provision of world class facilities, like this, is an important step in the right direction. The positive impact that this project will have on our ability to deliver high quality services will help us to ensure that students’ expectation of their Union will not only be met but exceeded. Students come to Bristol because they want an excellent education and a full and rounded student experience, the refurbishment of the SU building will ensure that the University’s ability to deliver this goes from strength to strength.”

Samantha Budd, SU CEO

The goal of this major refurbishment project is to transform the Queen’s Road Building into a vibrant, welcoming and sustainable facility for university students, staff and visitors. The wide range of social, activity, performance and study spaces have been located in the building so that they are easy to both find and use. A variety of bookable and non-bookable spaces allow for both planned and impromptu use by individual students, groups and societies.

The design of Phase 1 of the project has been in progress for over two years. Construction is now underway, incorporating a new entrance and foyer, swimming pool changing facilities, and teaching and administrative spaces to the upper floors. Concept Design of Phase 2 is now in progress, and the current ‘work-in-progress’ proposals are illustrated here.



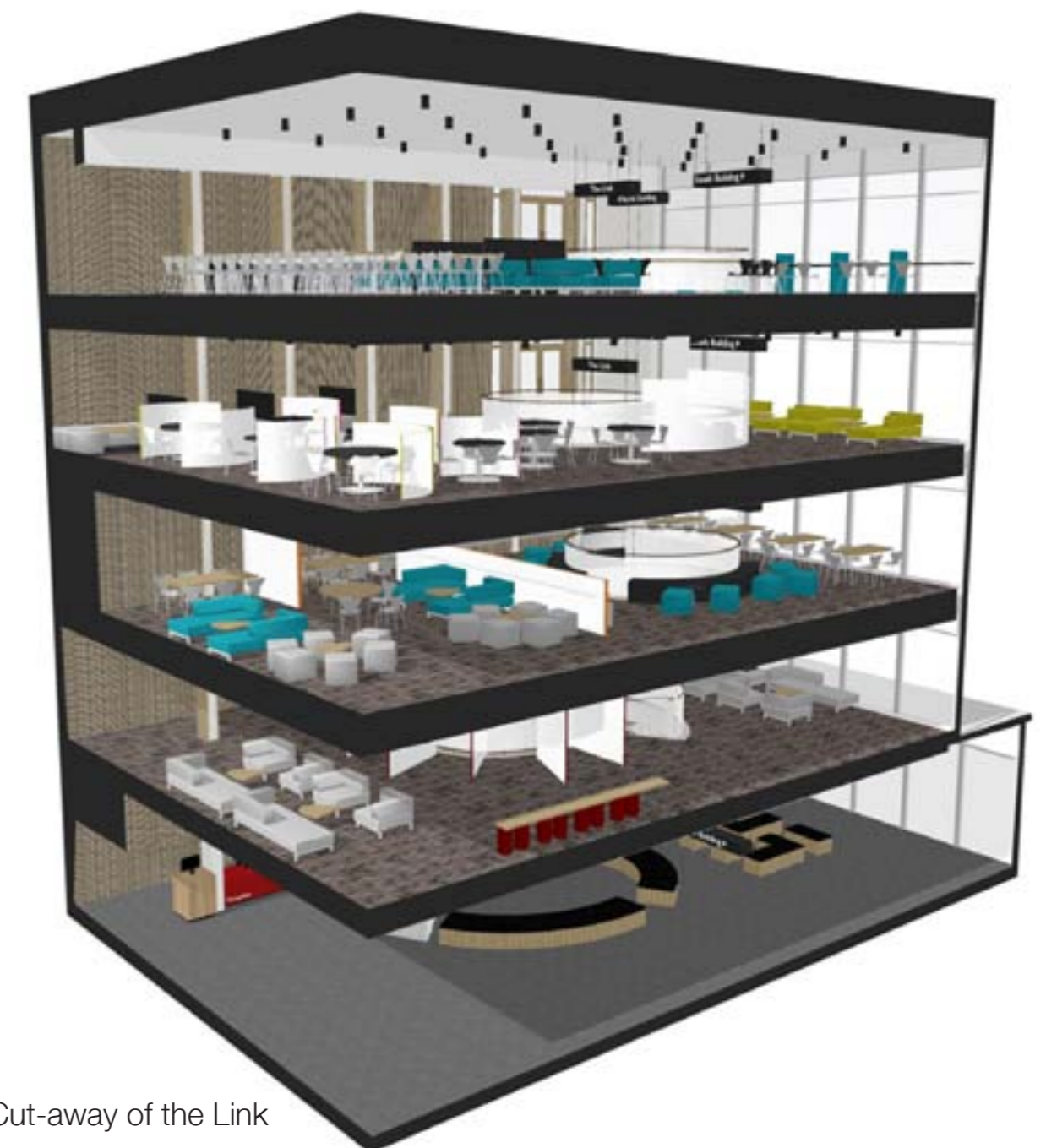
New Entrance Lobby

Pool Reception

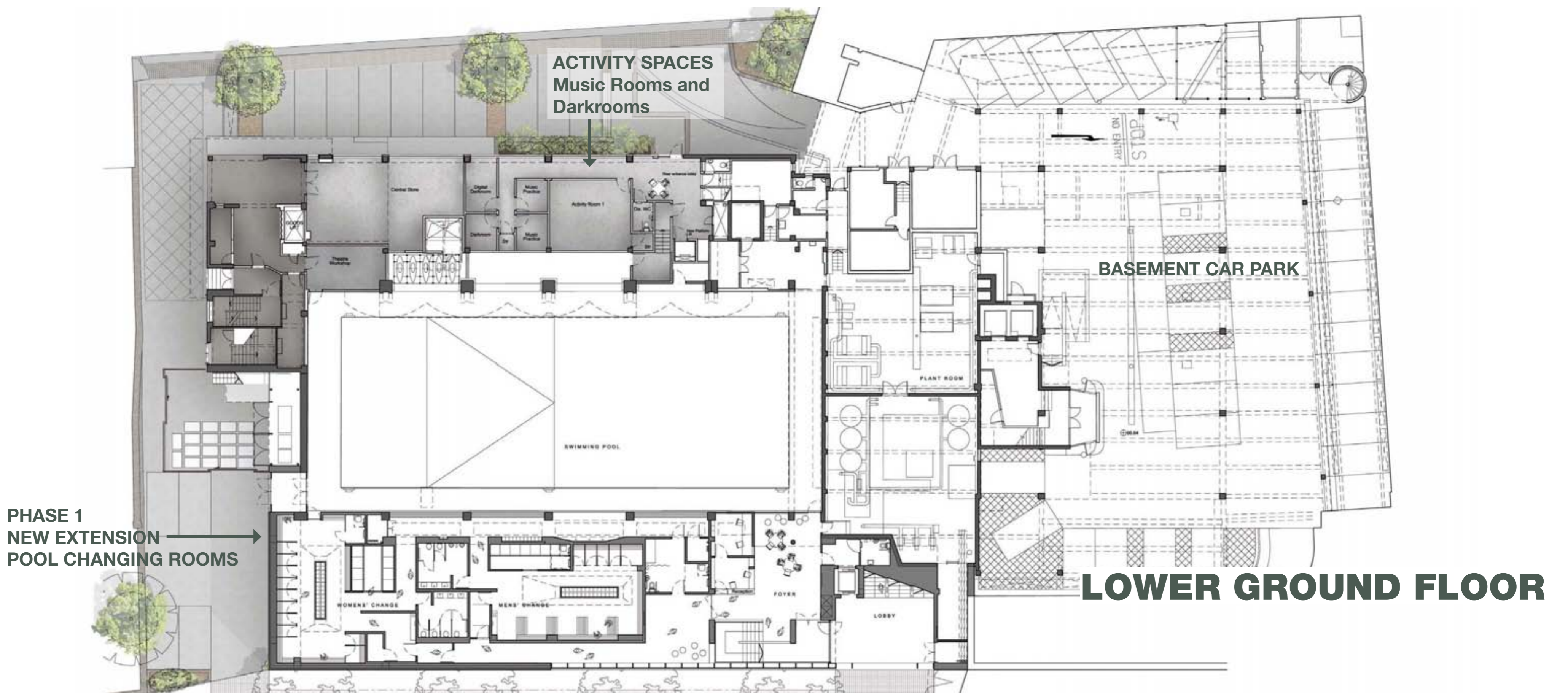


Swimming Pool

Entrance Foyer



Cut-away of the Link



# 2

# MEETING PLACES



Cafe Bar - Ground Floor

View to Cafe Bar from Foyer

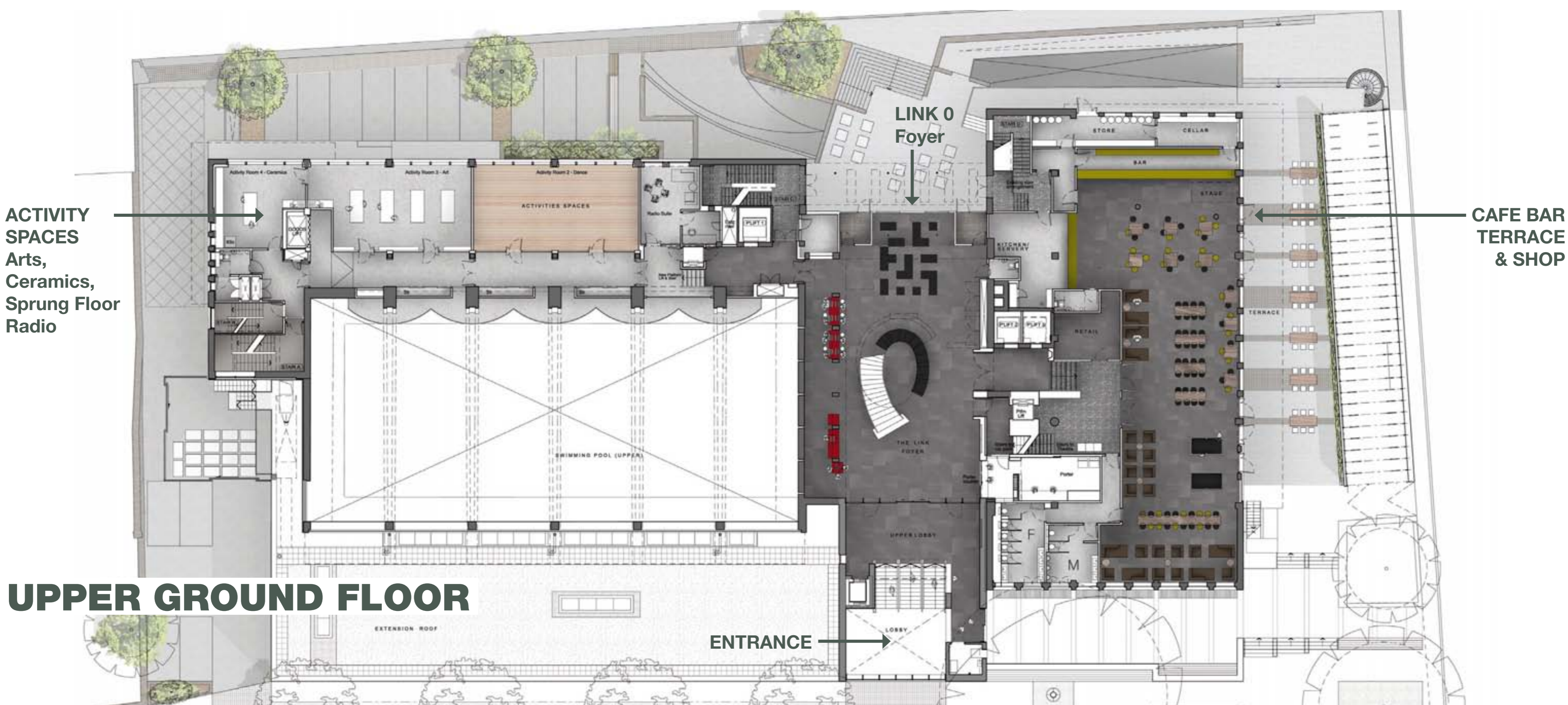


Cafe Bar - New windows on to Queen's Road and Terrace



“ The new cafe bar is going to be a brilliant vibrant social hub our students can be proud of. The perfect place to relax in the day and let your hair down at night.  
Dom Oliver, Sports Officer ”

The vision for the building includes meeting and eating places that are designed to be open both in the day and evening. The café bar will be much larger and, during the day, lighter than Bar100. This will be a welcoming social + study café in the daytime, and a lively bar in the evening. The bar terrace is also to be refurbished, and made more accessible from the café bar interior.



# 3

# ANSON ROOM + THEATRES



Anson Room - Daylight Screens

Anson Room - Acoustic Partitions

Drama Studio / Activity Space - First Floor



Student and professional performance have a long history at the building. An aim of the project is to maintain this cultural identity, while also ensuring the performance spaces are designed for a wide variety of other uses. A key aim is to bring daylight into the Anson Room with sliding acoustic screens to the façade, and to also enable its acoustic subdivision into two separately useable spaces.

Another aim is to provide an Activities Space on the first floor that can also be used as a Drama Studio, replacing the Lady Winsor Theatre on the fifth floor. The relocated Drama Studio will now be able to share the box office and foyer of the Winston Theatre, and be nearer the building entrance foyer.

“...as long as there are big rooms in which societies can run classes/ events! This is the key role of the union as I see it and must be preserved as much as possible through/after the refurbishment”  
Feedback from Say-It Survey, 2010





Large Activity Space - Second Floor

Activity Spaces - Upper Ground Floor

Activity Space - Second Floor

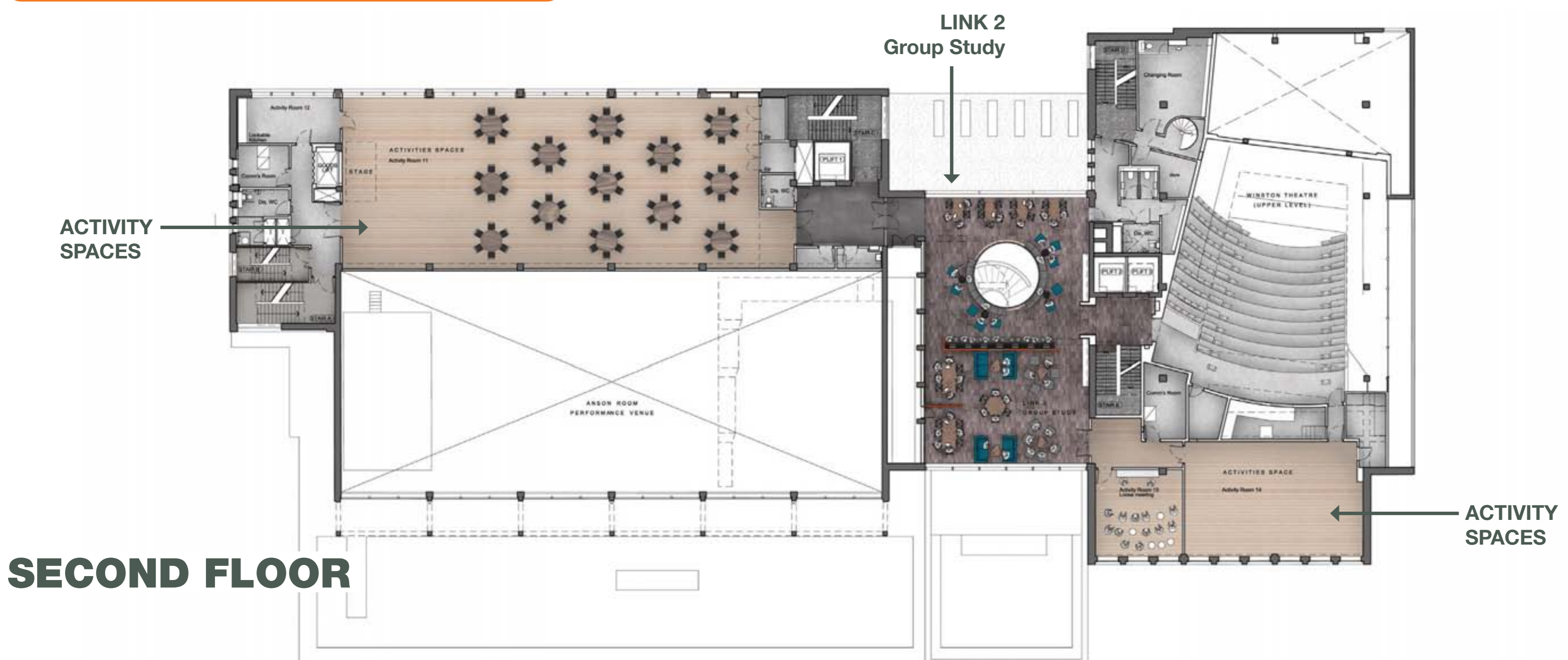


“ Here at UBU we are so lucky to have such an active and vibrant group of students doing such a varied range of activities. In the design process, a lot of care was taken to make sure the new building caters to the diverse needs of Bristol’s student activity groups, and will continue doing so for years and years to come.”

Chris Ruff, SU Activities Officer

A wide variety of Activity Spaces are proposed throughout the building. The range of room sizes and functions is based on on-going analysis of previous years’ room bookings for society and special event use.

Specialist spaces such as music and dark rooms, art and ceramic rooms, and a sprung-floor facility, are located to the lower floors. Larger, more versatile rooms are located to the upper floors. This includes the Anson Room, which can be subdivided by acoustic partitions to enable more flexible use.



# 5

# UBU MEMBERSHIP HUB



UBU Membership Hub - Third Floor

UBU Offices - Third Floor



Digital Media Suite - Fourth Floor

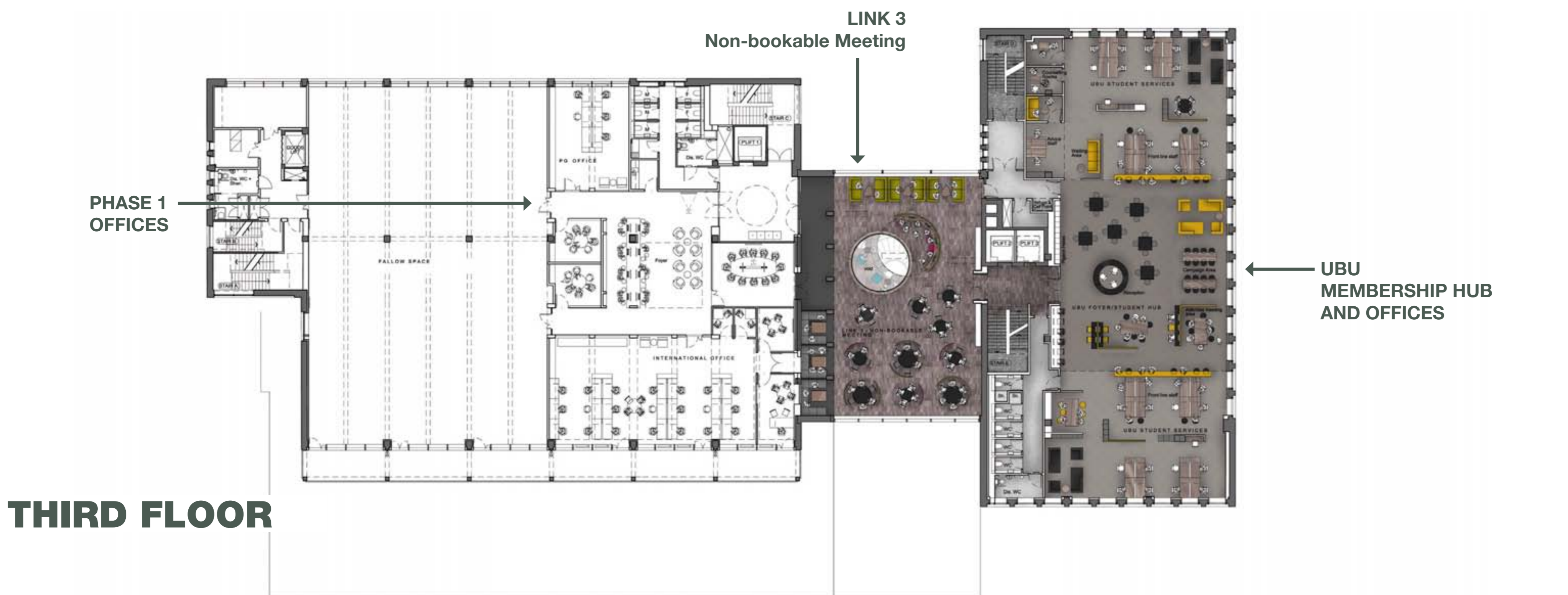


The third and fourth floor of the 'South Building' will be home to UBU Membership services. The layout of these areas follows a re-think of how frontline UBU representatives can better engage with student visitors.

The third floor is arranged around an open-plan, versatile hub space providing meeting and activity zones for UBU staff, student visitors and societies.

The fourth floor is arranged around a central media suite: a bookable 'hot-room' that will provide digital media facilities for group working.

“ It is really important to us that the union is at the heart of a welcoming student community.  
 Sophie Bennett  
 SU Welfare and Equality Officer ”



THIRD FLOOR

# 6

# COMMUNAL SPACES



Link 3 - Non-bookable Meeting

The original design of the building provided plenty of break-out space in the form of the 'Link' atrium floors. In the past this has not been a comfortable environment. The new glazing and entrance lobby will now help to prevent overheating in summer and draughts in winter. A key aim of the refurbishment design is to provide much needed non-bookable social & study spaces on each of the Link floors. There is a fantastic opportunity to give the four floors a variety of uses, creating more vibrant spaces in the lower floors and quieter places in the upper floors. Our current proposals suggest a sequence of: 1 foyer & exhibition; 2 group study; 3 non-bookable meeting and 4 individual study spaces.

The design of these spaces will incorporate a very clear wayfinding strategy to help users understand and what's in the building, and where it can be found.

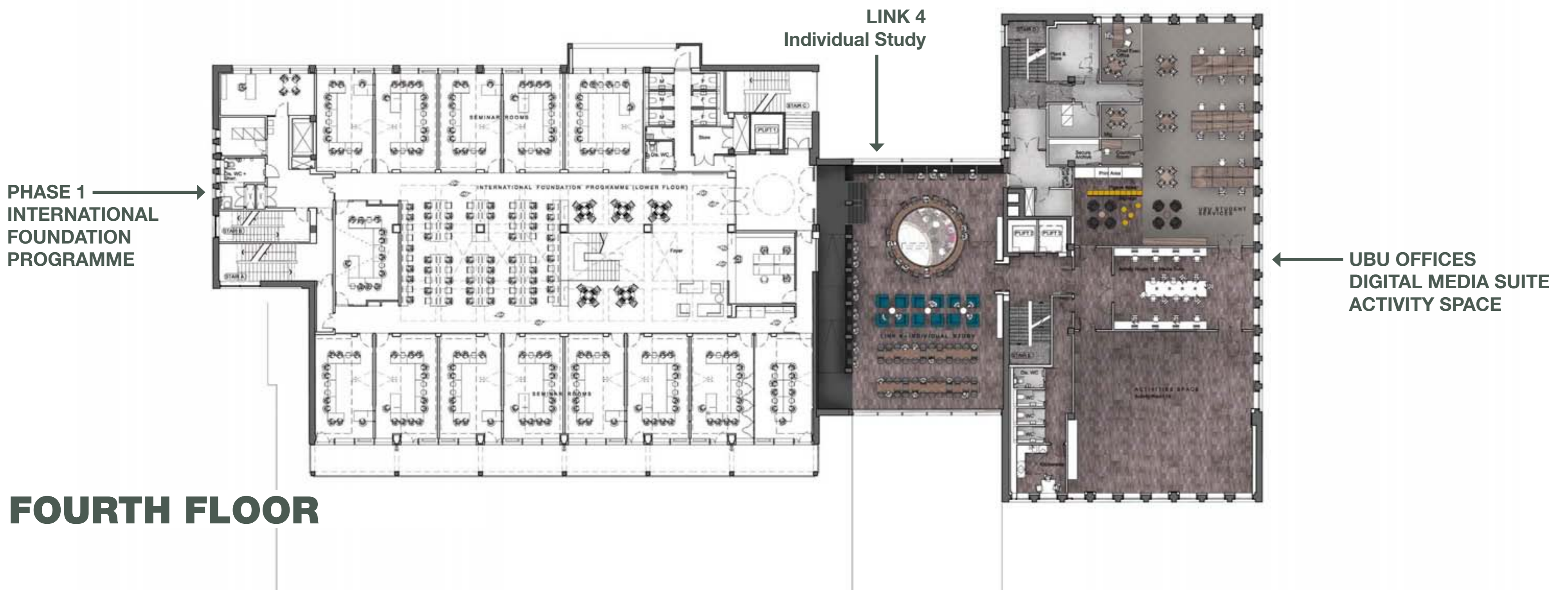
“ After a major survey that took place in 2010, it became very apparent that the building needed dramatic and real change so it can be a practical and friendly place where students can take part, meet and get advice. It's a massive investment and one that will have a hugely significant impact on student life and will keep the union a lively and fun place. ”  
Gus Baker, SU President



Link 2 - Group Study



Link 4 - Individual Study



# YOUR FEEDBACK

**We are looking for your feedback and ideas before we progress the design further.**

**There are several ways you can get involved:**

- **Talk to us - we'll be in the building at various events in October**
- **Email at:** [ubu-build@bristol.ac.uk](mailto:ubu-build@bristol.ac.uk)
- **Comment online at:** [ubu.org.uk/build](http://ubu.org.uk/build)
- **Take part in our survey about the social spaces at:** [ubu.org.uk/build](http://ubu.org.uk/build)
- **Through your club or society leader and Societies Executive**
- **Join in one of four Creative Workshops being held on Monday 18th and Tuesday 19th October - anyone is welcome and food will be provided**  
**Sign up by emailing:** [ubu-build@bristol.ac.uk](mailto:ubu-build@bristol.ac.uk)
- **Leave us a Post-it message below:**

Messages